

Using the Automated Translation Tools in the Visual Studio Environment

Our translators were designed to be fully integrated with the Microsoft Visual Studio environments. They will generate error messages that are compatible with the Microsoft IDE. If you are familiar with Microsoft Visual Studio, you will know how to run the translator. If not, here is how you begin:

Where to install the translator

You can install the translator in any directory.

Setup of Visual Studio

The setup of Visual Studio environment:

- 1) Add the translator command to the External Tools Menu.
- 2) Set up the Title, Command and Arguments.

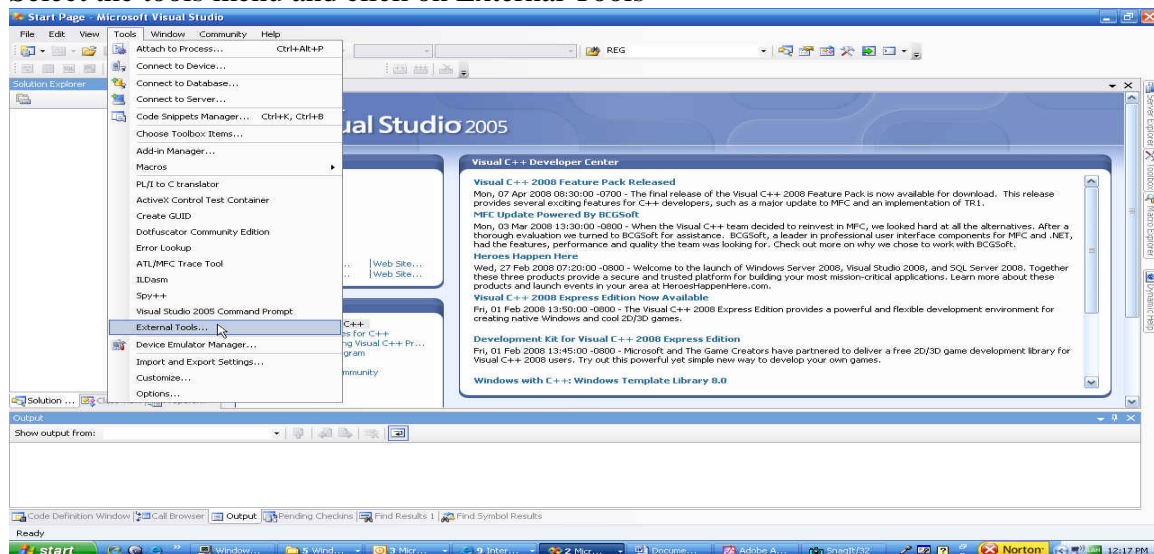
Running the translator

The translation of a file requires:

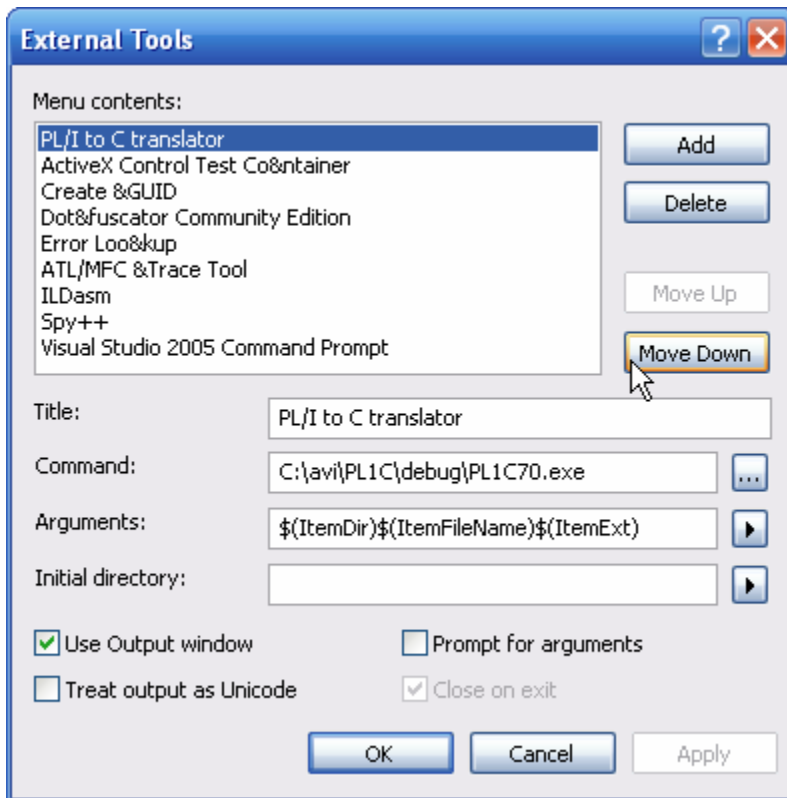
- 1) Open the translation file with Visual Studio.
- 2) Run the translator using the translator command in the Tools Menu.
- 3) Correct for errors in the translation input file.
- 4) Save the translation file.
- 5) Test the translation file with the Visual Studio compiler.

Set up the translator command in the Tools Menu

Select the tools menu and click on External Tools



The External Tools message box will appear.
Select to add a tool by clicking on “Add”.



Fill out the Title, Command and Arguments.

Title is the name of the command as it will appear in the Tools Menu.

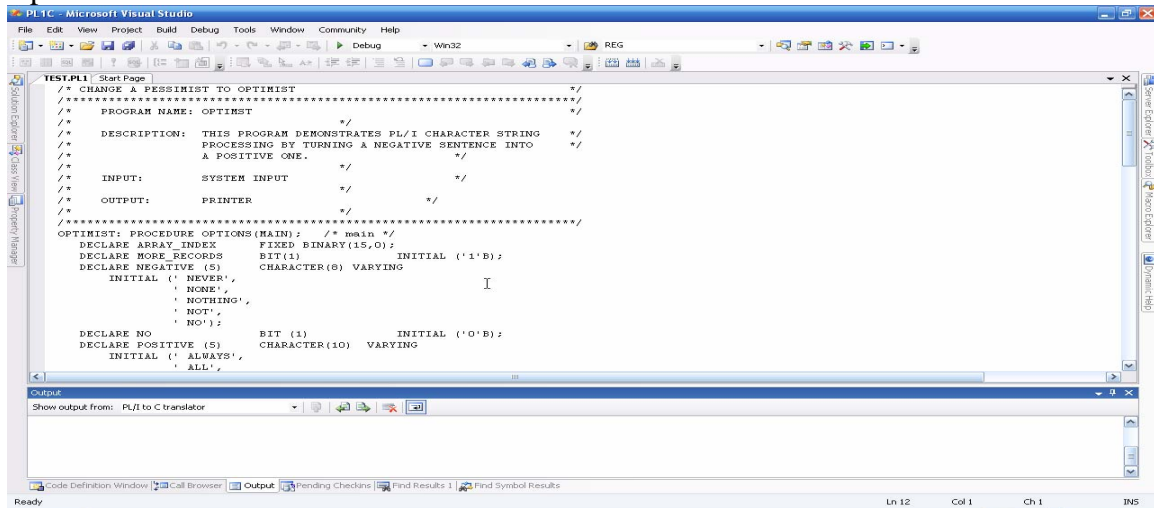
Command is the path and the translator name and extension.

Arguments are the current file that you are translating and any translator command line options you may need.

Make sure that you check the “Use Output window” check box.

Running the translator

Open the translation file in the Visual Studio Window.

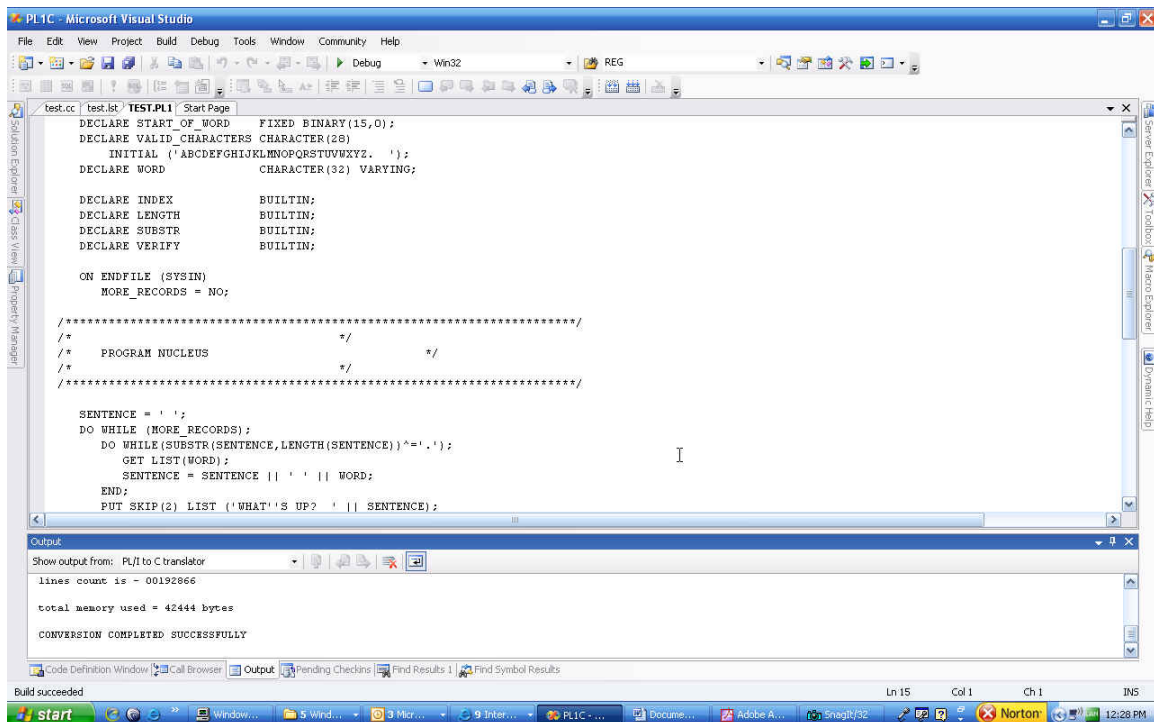


While the translation file is highlighted (selected), select the translator command in the Tools Menu, and click the translator command.

The file will be translated automatically.

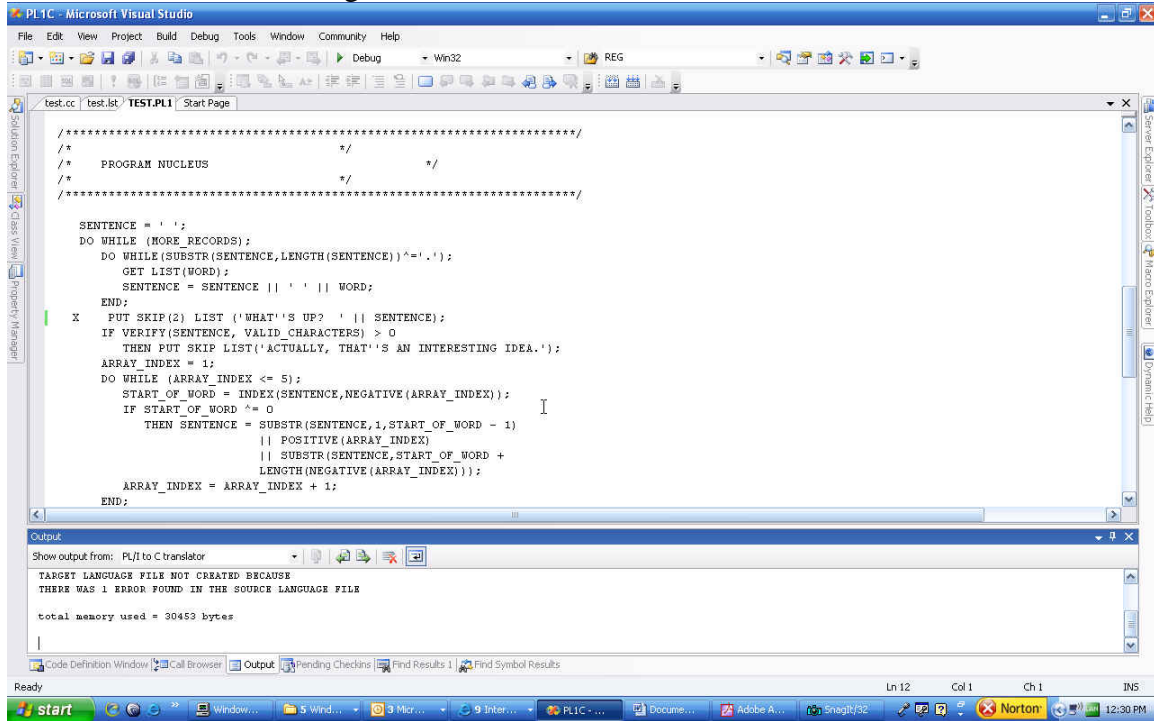
The result of the translation will appear in the Output Window.

When the translation completes successfully, you will see the following screen:

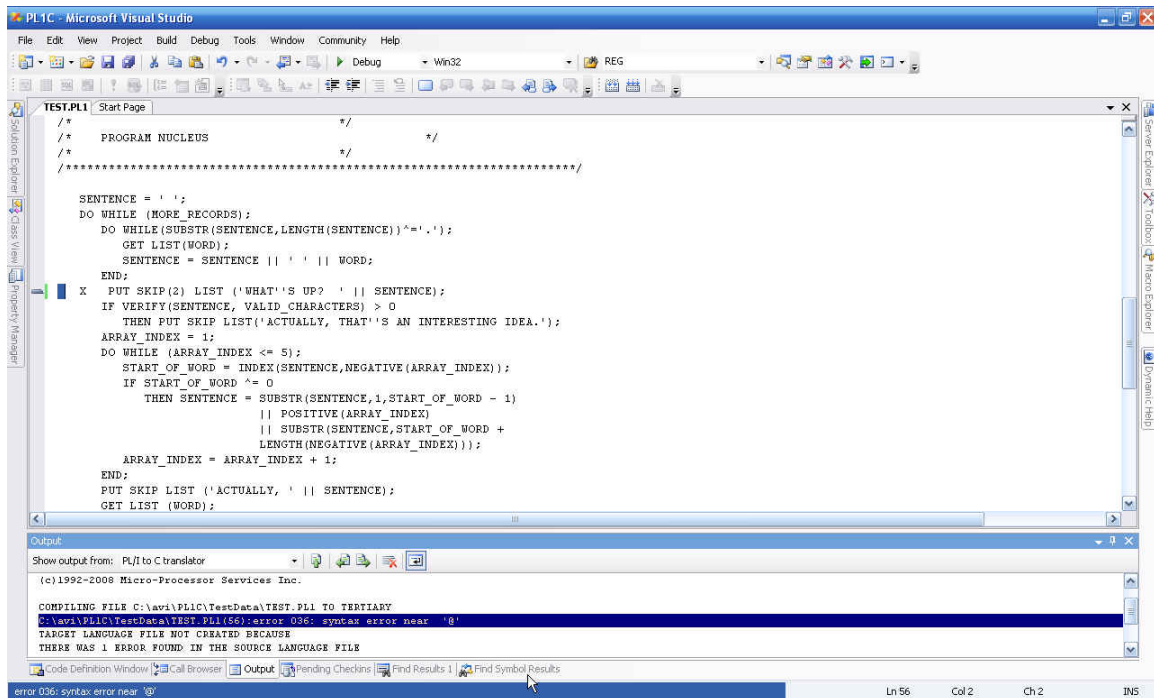


If the translator encounters an error in the input file, then you will get a screen with error messages in the output file. If you click on any of the error messages, the cursor will

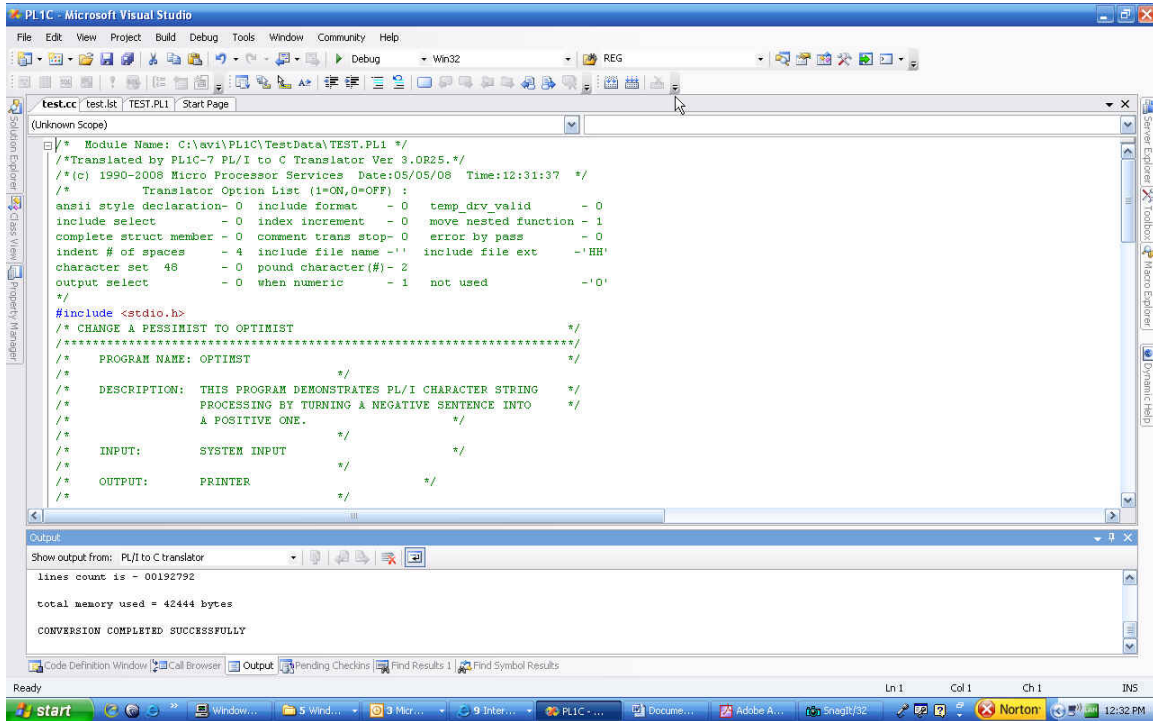
jump to the exact location of the error in the translation input file. Edit the error, and you can invoke the translator again.



Here is a sample screen of a translation input file with an error in line 56. Clicking on the error line in the Output window will bring the cursor to the error location. Correct the error and run the translator again.



Open the translator output file and test it with the Microsoft compiler.



Support Team

Micro-Processor Services Inc.